



IRVINE-LAGUNA WILDLIFE CORRIDOR

Connecting Habitats from Mountains to Coast

A PROJECT OF LAGUNA GREENBELT, INC.

THIS NEWSLETTER'S FEATURED ARTICLES:

- ILWC Conversations - 1
- Earth Day Recap - 3
- OC Insects - 4
- Summer Events - 5

CONVERSATIONS IN THE CORRIDOR

By Giovanni Di Franco

This past April, Laguna Greenbelt, Inc. had the opportunity to lead Irvine Councilmember Kathleen Treseder, PhD and her team (Yousef Kaddeche and Vasantha Kandasamy) through the Irvine-Laguna Wildlife Corridor (ILWC). With help from FivePoint representative, John Leonard, we



entered the corridor for a closer look at a section of the multi-benefit project, projected to be completed in 2026 (potentially in 2025 according to Mr. Leonard). Over 250,000 native plants have been grown, including patches of prickly pear cactus, California bush sunflower, caterpillar

phacelia, and more. Many of these species were in full bloom. Our rainy winter produced new growth for the spring season.

During the tour, Norm Grossman, Laguna Greenbelt Board President, highlighted the City of Irvine's great opportunity to support the ILWC project. “We need a champion”, Norm stated, “someone to push for our project at the city level.”

Additionally, the Biden Administration’s commitment to the 30 X 30 initiative under the America the Beautiful Executive Order 14008 and Executive Order N-82-20 issued by California State Governor Newsom encourages our cities and states to take steps towards conservation to combat climate change. The Irvine-Laguna Wildlife Corridor serves as a pathway to connect fragmented habitats in Orange County.



Happening soon...

Laguna Greenbelt, Inc. will host a private tour for local and state government officials this June. Attendees will learn about the Corridor to raise awareness and garner support for the project.



EARTH DAY AT THE BAY: A SUCCESS!

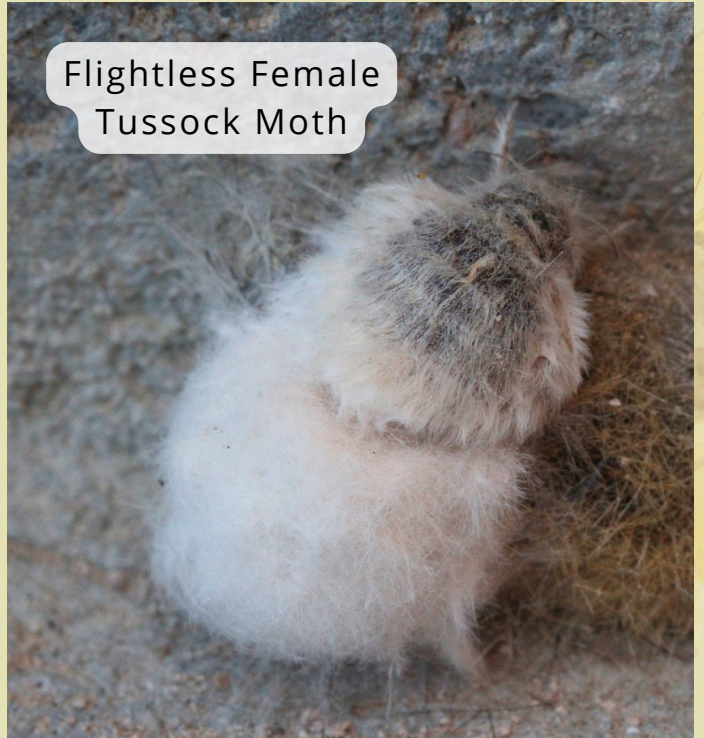
The Newport Bay Conservancy's Earth Day event this past April was a vibrant celebration of our planet with other organizations. We enjoyed educating local community members about the amazing ILWC project. Many visitors were excited to hear about the pathway to assist our native wildlife! A great addition to the day was the cliff swallows nesting under the eaves of the Peter and Mary Muth Interpretive Center.

INSECTS IN ORANGE COUNTY

Photos courtesy of Laura Cohen



Male
Tussock
Moth



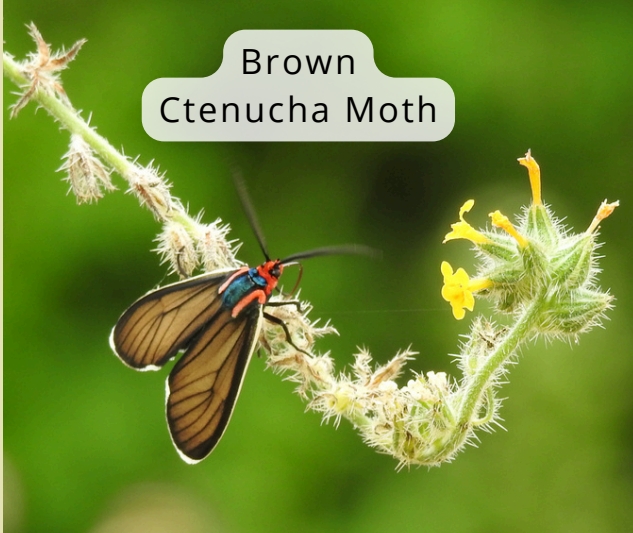
Flightless Female
Tussock Moth



Western Tiger
Swallowtail



Tussock Moth
Caterpillar



Brown
Ctenucha Moth

FOLLOW US FOR MORE!
@lagunagreenbelt



SUMMER EVENTS - JUNE!

Nature Meditation Walk

June 8 @ 3 PM - 5 PM



Do you want to unplug and relax into nature? Join a Naturalist on a guided walk to truly be outside and allow your natural sense of wonder to take you to a mindful space outside.

Follow the link
to register

<https://bit.ly/3wG29KQ>

A green poster for the 2024 Cool Irvine Eco Fair. It features a central image of hands holding a globe of Earth. A white arrow points from the top right towards the globe. A white speech bubble says "Visit our Booth!". A yellow speech bubble says "Follow the link to register". A circular logo for Laguna Greenbelt, Inc. is in the top right. The poster lists various activities and includes logos for partner organizations at the bottom.

2024 COOL IRVINE ECO FAIR

- Compost Demos
- Upcycled Arts & Crafts
- Opportunity drawing
- Energy efficiency
- Food Truck
- Water Conservation
- EV Vehicle Info
- Local/federal incentives
- Plant-based diets
- Waste Management

JUNE 15TH, 10AM-2PM AT
THE GREAT PARK IN IRVINE

WWW.COOLIRVINE.ORG

Visit our Booth!

Follow the link to register

<https://bit.ly/3KjaBmo>

LAGUNA GREENBELT, INC.

POWER AUTHORITY, South Coast AQMD, HARTS WORM FARM, goes solar, Irvine Ranch Water District

Sow & Grow

June 21 @ 9 AM - 12 PM



Bring a friend and help us grow native plants for restoration projects around Upper Newport Bay. assist in seasonal activities like seed collection, sowing seed flats, transplanting seedlings, pruning, processing cuttings, composting, pot washing, weeding, and maintaining nursery space.

Follow the link for
more information

<https://bit.ly/4aByiB1>



IRVINE-LAGUNA WILDLIFE CORRIDOR

Connecting Habitats from Mountains to Coast

A PROJECT OF LAGUNA GREENBELT, INC.

Laguna Greenbelt, Inc. works to preserve open space and support wildlife that depend on local habitats to thrive.

.....

Donate at:

<https://lagunagreenbelt.org/donate-2/>

Mail checks to
Laguna Greenbelt, Inc.
P.O. Box 860
Laguna Beach, CA 92652