



IRVINE-LAGUNA WILDLIFE CORRIDOR

Connecting Habitats from Mountains to Coast

A PROJECT OF LAGUNA GREENBELT, INC.

THIS NEWSLETTER'S FEATURED ARTICLES:

It is The ILWC Groundbreaking
Anniversary! - 1

Close-ups of Nature - 3

Local Volunteer Events - 4



5 YEAR ANNIVERSARY - THE IRVINE-LAGUNA WILDLIFE CORRIDOR GROUNDBREAKING

By Giovanni Di Franco, Laguna Greenbelt, Inc.

Not long ago, the Irvine Great Park area was the remnants of the Marine Corps Air Station. Fortunately, the developer FivePoint collaborated with the City of Irvine, Laguna Greenbelt, Inc.,

and other advocacy partners worked together to envision the start of the central reach of the Irvine-Laguna Wildlife Corridor.

Instead of the typical residential development, FivePoint agreed to construct a portion of the Corridor alongside their Great Park Neighborhoods.

The groundbreaking ceremony, held on March 13, 2018, became a significant stepping stone in the creation of a fully functioning wildlife corridor.

The central reach has been skillfully and successfully planted and maintained over the last five years. Today, this portion of the Irvine-Laguna Wildlife Corridor is full of thriving plant life and beginning to show signs of wildlife. Our 2017-2018 Corridor Camera Study revealed the presence of wildlife in our Northern and Southern reaches. This included families of coyotes, native birds, rabbits, and even a sighting of our native feline, the bobcat.



We are grateful for the continued work being performed in the central reach by FivePoint. We hope for more successful partnerships and projects with local organizations who share our passion for habitat connectivity and the preservation of open space in Orange County.



For more information
about the Corridor visit
our website:
www.wildlifecorridor.org



WILDLIFE & NATURE

AT THE JAMES DILLEY PRESERVE

PHOTOS PROVIDED BY LAURA COHEN,
LAGUNA GEENEBLT, INC, BOARD MEMBER



A Red-tailed hawk perched in a sycamore tree. Many hawks at this time of year must hunt to provide for their newly hatched brood. (ABOVE)

A wrentit perched on a mulefat collecting seed fluff for nesting. (BELOW)



Blooming Purple Owl's Clover. It is no surprise how this plant got its name. Found in grassland areas, this clover blooms from March into May. (BELOW)

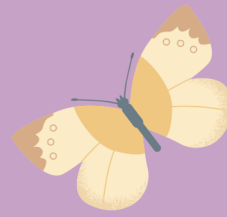


Blooming Parry's Phacelia with Yellow Suncups in the background. This shot was taken along the trails in the Dilley preserve. (ABOVE)



GET INVOLVED!

ORGANIZATIONS SERVING HABITATS OF ORANGE COUNTY



Oak Woodland Hike - Canyon View Staging Area

May 26 @ 9:00 AM - 11:00AM

No registration required! Enjoy a 2.5 mile hike with the Laguna Canyon Foundation.

For more information visit:

<https://lagunacanyon.org/events/>



Trail Stewardship -Meadows

May 27 @ 8:00 AM - 12:00 PM

Registration required. Participate in maintaining the trails by restoring areas impacted by erosion and overgrowth. For more info and to register visit:

<https://lagunacanyon.org/events/>

Crystal Cove Marine Protected Area Hike

June 10 @ 8:30 AM - 11:00 AM

Enjoy a 2.5 mile hike guided by OC Habitats through the intertidal zone. Learn about the local marine habitat and its importance to our ecosystem.

For tickets visit: <https://www.eventbrite.com/e/och-coastal-intertidal-mpa-hike-little-corona-to-crystal-cove-and-back-tickets-452198677417>



THANK YOU FOR YOUR CONTINUED SUPPORT!

**Laguna Greenbelt, Inc. works to preserve open space and
support wildlife that depends on local habitats to thrive.**

Donate at:

<https://lagunagreenbelt.org/donate-membership/>

or mail a check to

Laguna Greenbelt, Inc.

P.O. Box 860, Laguna Beach, CA 92652



**Irvine-Laguna
Wildlife Corridor**

**Connecting Habitats
from Mountains to Coast**